

Installation and maintenance instructions



etromMAG

MAG mini ..4/1 I

EE

Publisher/manufacturer

Vaillant GmbH

Berghauser Str. 40 ■ D-42859 Remscheid
Tel. +492191 18 0 ■ Fax +492191 18 2810
info@vaillant.de ■ www.vaillant.de

 **Vaillant**

Contents

| | | | | | |
|----------|--|-----------|-----------------------|---|-----------|
| 1 | Safety | 3 | 8.10 | Repairing any damage to the coating of the heat exchanger | 16 |
| 1.1 | Action-related warnings | 3 | 8.11 | Checking the water valve | 16 |
| 1.2 | Intended use | 3 | 8.12 | Checking the heat input | 16 |
| 1.3 | General safety information | 3 | 8.13 | Setting the maximum heat input | 17 |
| 1.4 | Regulations (directives, laws, standards) | 5 | 8.14 | Replacing the battery | 18 |
| 2 | Notes on the documentation | 6 | 8.15 | Completing inspection and maintenance work | 18 |
| 2.1 | Observing other applicable documents | 6 | 8.16 | Checking the product for leak-tightness | 18 |
| 2.2 | Storing documents | 6 | 9 | Decommissioning | 18 |
| 2.3 | Validity of the instructions | 6 | 10 | Recycling and disposal | 18 |
| 3 | Product description | 6 | 11 | Customer service | 18 |
| 3.1 | Information on the data plate | 6 | Appendix | | |
| 3.2 | Product design | 6 | A | Commissioning checklist | 19 |
| 3.3 | CE marking | 6 | B | Troubleshooting | 19 |
| 4 | Set-up | 6 | C | Tables of gas settings | 20 |
| 4.1 | Checking the scope of delivery | 6 | D | Inspection and maintenance interval | 20 |
| 4.2 | Wall pre-installation | 7 | E | Technical data | 21 |
| 4.3 | Minimum clearances | 7 | | | |
| 4.4 | Dimensions | 8 | | | |
| 4.5 | Requirements for the installation site | 9 | | | |
| 4.6 | Removing the product casing | 9 | | | |
| 4.7 | Installing the product casing | 9 | | | |
| 4.8 | Wall-mounting the product | 9 | | | |
| 5 | Installation | 9 | | | |
| 5.1 | Information on the gas group | 10 | | | |
| 5.2 | Purging the liquid gas tank | 10 | | | |
| 5.3 | Using the correct gas type | 10 | | | |
| 5.4 | Sequence for installing the connection | 10 | | | |
| 5.5 | Connecting the flue pipe | 10 | | | |
| 6 | Start-up | 11 | | | |
| 6.1 | Carrying out the initial start-up | 11 | | | |
| 6.2 | Checking and, if required, setting the water flow rate | 11 | | | |
| 6.3 | Gas conversion | 11 | | | |
| 6.4 | Checking that the flue gas sensor works correctly | 11 | | | |
| 6.5 | Checking the gas flow pressure | 12 | | | |
| 6.6 | Checking leak-tightness | 12 | | | |
| 6.7 | Handing the product over to the end user | 12 | | | |
| 7 | Troubleshooting | 13 | | | |
| 7.1 | Detecting and eliminating faults | 13 | | | |
| 7.2 | Eliminating faults in the product | 13 | | | |
| 8 | Inspection and maintenance | 13 | | | |
| 8.1 | Procuring spare parts | 13 | | | |
| 8.2 | Draining the product | 13 | | | |
| 8.3 | Removing the burner | 13 | | | |
| 8.4 | Cleaning the burner | 14 | | | |
| 8.5 | Cleaning the injector rail | 14 | | | |
| 8.6 | Removing the down-draught diverter | 15 | | | |
| 8.7 | Cleaning the down-draught diverter | 15 | | | |
| 8.8 | Removing the heat exchanger | 15 | | | |
| 8.9 | Cleaning the heat exchanger | 16 | | | |

1 Safety

1.1 Action-related warnings

Classification of action-related warnings

The action-related warnings are classified in accordance with the severity of the possible danger using the following warning signs and signal words:

Warning symbols and signal words



Danger!

Imminent danger to life or risk of severe personal injury



Danger!

Risk of death from electric shock



Warning.

Risk of minor personal injury



Caution.

Risk of material or environmental damage

1.2 Intended use

There is a risk of injury or death to the user or others, or of damage to the product and other property in the event of improper use or use for which it is not intended.

The product is designed for use as a heat generator for hot water generation.

Depending on the unit type, the products referred to in these instructions must only be installed and operated in conjunction with the air/flue pipe accessories listed in the other applicable documents.

The use of the product in vehicles, such as mobile homes and caravans, is not classed as intended use. Units that are not classed as vehicles are those that are installed in a fixed and permanent location (known as "fixed installation").

Intended use includes the following:

- observance of accompanying operating, installation and maintenance instructions for the product and any other system components
- installing and setting up the product in accordance with the product and system approval

- compliance with all inspection and maintenance conditions listed in the instructions.

Intended use also covers installation in accordance with the IP code.

Any other use that is not specified in these instructions, or use beyond that specified in this document, shall be considered improper use. Any direct commercial or industrial use is also deemed to be improper.

Caution.

Improper use of any kind is prohibited.

1.3 General safety information

1.3.1 Risk caused by inadequate qualifications

The following work must only be carried out by competent persons who are sufficiently qualified to do so:

- Set-up
- Dismantling
- Installation
- Start-up
- Inspection and maintenance
- Repair
- Decommissioning
- ▶ Proceed in accordance with current technology.

1.3.2 Risk of death due to blocked or leaking flue gas routes

Installation errors, damage, tampering, impermissible installation sites or similar can cause flue gas to escape and result in a risk of poisoning.

What to do if you smell flue gas in the property:

- ▶ Open all accessible doors and windows fully to provide ventilation.
- ▶ Switch off the product.
- ▶ Check the flue gas routes in the product and the flue gas diversions.

1.3.3 Risk of poisoning due to missing flue gas monitoring device

Flue gases may escape into the installation room under unfavourable conditions. If this happens, the flue gas monitoring device

1 Safety

switches the heat generator off. If a flue gas monitoring device has not been installed, the heat generator will continue to run.

- ▶ Never decommission the flue gas monitoring device.

1.3.4 Risk of poisoning caused by insufficient combustion air supply

Condition: Open-flued operation

- ▶ Ensure that the air supply to the product's installation room is permanently unobstructed and sufficient in accordance with the relevant ventilation requirements.

1.3.5 Risk of corrosion damage due to unsuitable combustion and room air

Sprays, solvents, chlorinated cleaning agents, paint, adhesives, ammonia compounds, dust or similar substances may lead to corrosion on the product and in the flue system.

- ▶ Ensure that the supply of combustion air is always free of fluorine, chlorine, sulphur, dust, etc.
- ▶ Ensure that no chemical substances are stored at the installation site.
- ▶ If you are installing the product in hairdressing salons, painter's or joiner's workshops, cleaning businesses or similar locations, choose a separate installation room in which the room air is technically free of chemical substances.
- ▶ Ensure that the combustion air is not routed through chimneys which have previously been used with floor-standing oil-fired boilers, or with other boilers, which could cause soot to build up in the chimney.

1.3.6 Risk of death due to cabinet-type casing

Cabinet-type casing can give rise to dangerous situations when used on a product which is operated with an open flue.

- ▶ Ensure that the product is supplied with sufficient combustion air.

1.3.7 Risk of death due to explosive and flammable materials

- ▶ Do not use the product in storage rooms that contain explosive or flammable substances (such as petrol, paper or paint).

1.3.8 Risk of death from escaping gas

What to do if you smell gas in the building:

- ▶ Avoid rooms that smell of gas.
- ▶ If possible, open doors and windows fully and ensure adequate ventilation.
- ▶ Do not use naked flames (e.g. lighters, matches).
- ▶ Do not smoke.
- ▶ Do not use any electrical switches, mains plugs, doorbells, telephones or other communication systems in the building.
- ▶ Close the emergency control valve or the main isolator.
- ▶ If possible, close the gas stopcock on the product.
- ▶ Warn other occupants in the building by yelling or banging on doors or walls.
- ▶ Leave the building immediately and ensure that others do not enter the building.
- ▶ Alert the police and fire brigade as soon as you are outside the building.
- ▶ Use a telephone outside the building to inform the emergency service department of the gas supply company.

1.3.9 Risk of material damage caused by frost

- ▶ Do not install the product in rooms prone to frost.

1.3.10 Risk of death due to lack of safety devices

The basic diagrams included in this document do not show all safety devices required for correct installation.

- ▶ Install the necessary safety devices in the installation.
- ▶ Observe the applicable national and international laws, standards and directives.



1.3.11 Risk of burns or scalding caused by hot components

- ▶ Only carry out work on these components once they have cooled down.

1.3.12 Risk of poisoning and burns caused by escaping hot flue gases

- ▶ Only operate the product if the flue gas guiding has been completely installed.
- ▶ With the exception of short periods for testing purposes, only operate the product when the front casing is installed and closed.

1.3.13 Risk of death from leaks if the product is installed below ground level

Liquid gas accumulates at floor level. If the product is installed below ground level, liquid gas may accumulate at floor level if there are any leaks. In this case, there is a risk of explosion.

- ▶ Make sure that liquid gas cannot escape from the product or the gas pipe under any circumstances.

1.3.14 Risk of material damage caused by using an unsuitable tool

- ▶ Use the correct tool.

1.4 Regulations (directives, laws, standards)

- ▶ Observe the national regulations, standards, directives, ordinances and laws.



2 Notes on the documentation

2 Notes on the documentation

2.1 Observing other applicable documents

- ▶ Always observe all the operating and installation instructions included with the system components.

2.2 Storing documents

- ▶ Pass these instructions and all other applicable documents on to the end user.

2.3 Validity of the instructions

These instructions apply only to:

Product article number

| | |
|-------------------------|------------|
| MAG mini 114/1 I(H-INT) | 0010022598 |
|-------------------------|------------|

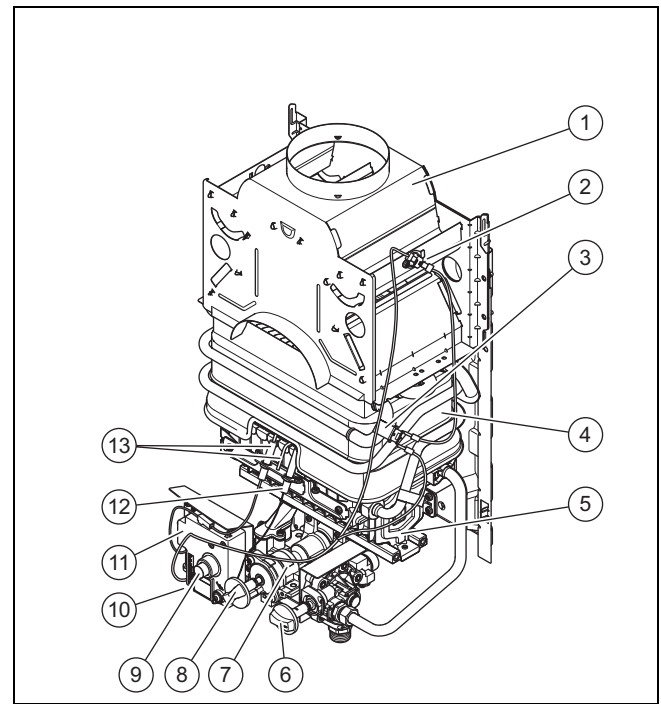
3 Product description

3.1 Information on the data plate

The data plate is mounted at the front of the down-draught diverter, under the product casing, at the factory.

| Information on the data plate | Meaning |
|-------------------------------|---|
| MAG | Product category |
| 11/14 | Power in l/min |
| -4/1 | Chimney connection/product generation |
| I | With electrical ignition and battery |
| atmoMAG | Product series |
| Type B11 BS | Approved unit type |
| Cat I | Single-gas unit |
| Cat II | Multiple gas type boiler |
| 2H 3P | Gas boiler category |
| G20/31 | Permitted gas types with connection pressures |
| P _{nom.} | Maximum heat output |
| P _{min.} | Minimum heat output |
| Q _{nom.} | Maximum heat input |
| Q _{min.} | Minimum heat input |
| P _{w max.} | Maximum permissible water pressure |
| Serial number | 7th to 16th digit = product article number |

3.2 Product design



- | | | | |
|---|---|----|-----------------------------------|
| 1 | Down-draught diverter | 7 | Gas valve assembly |
| 2 | Flue gas sensor | 8 | Rotary power switch |
| 3 | Safety cut-out | 9 | Main switch |
| 4 | Heat exchanger | 10 | Battery compartment (not visible) |
| 5 | Burner | 11 | Electronics box |
| 6 | Flow rate selector/temperature selector | 12 | Ignition electrode |
| | | 13 | Monitoring electrode |

3.3 CE marking



The CE marking shows that the products comply with the basic requirements of the applicable directives as stated on the declaration of conformity.

The declaration of conformity can be viewed at the manufacturer's site.

4 Set-up

4.1 Checking the scope of delivery

1. Remove the product from its box.
2. Check that the scope of delivery is complete and intact.

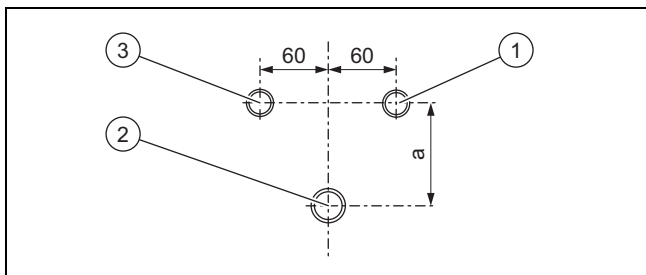
4.1.1 Scope of delivery

| Number | Designation |
|--------|--|
| 1 | Gas-fired instantaneous water heater |
| 1 | Connection accessories that are included |
| 1 | Enclosed documentation |

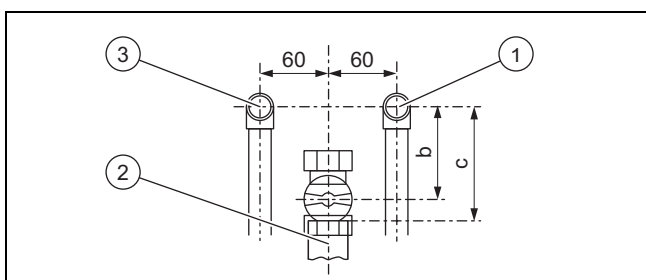
| Number | Designation |
|--------|--|
| 1 | Battery (monocells D/LR20) Note The battery is inserted in the lower Styrofoam cushion. |

| | Minimum clearance |
|---|--|
| A | 50 mm |
| B | 180 mm; optimum approx. 250 mm |
| C | 20 mm; optimum approx. 50 mm |
| D | 500 mm in front of the heat generator to enable easy access for maintenance work (may be provided by an opening door). |

4.2 Wall pre-installation



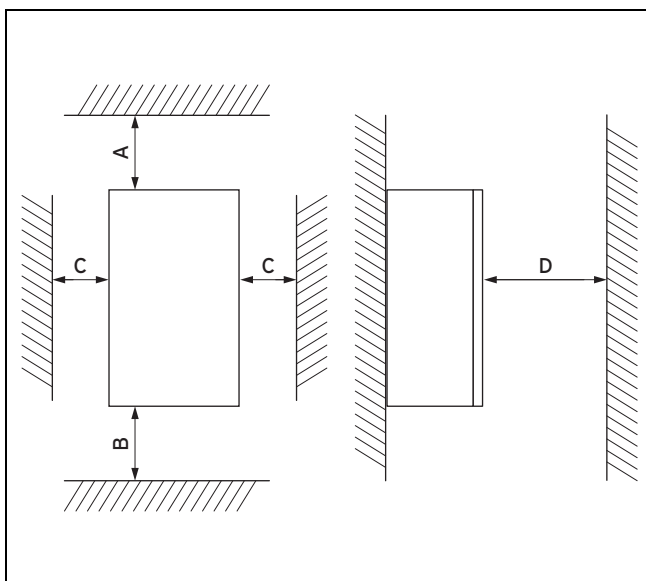
Flush mounting



Surface installation

- ▶ Install the connections as follows:
 - 1 = Cold water connection R 1/2
 - 2 = Gas connection
 - 3 = R 1/2 hot water connection
- ▶ Observe the following clearances for all product types:
 - a = 92 mm
 - b = 85 mm
 - c ≈ 100 mm without thermal isolator device
 - c ≈ 145 mm with thermal isolator device

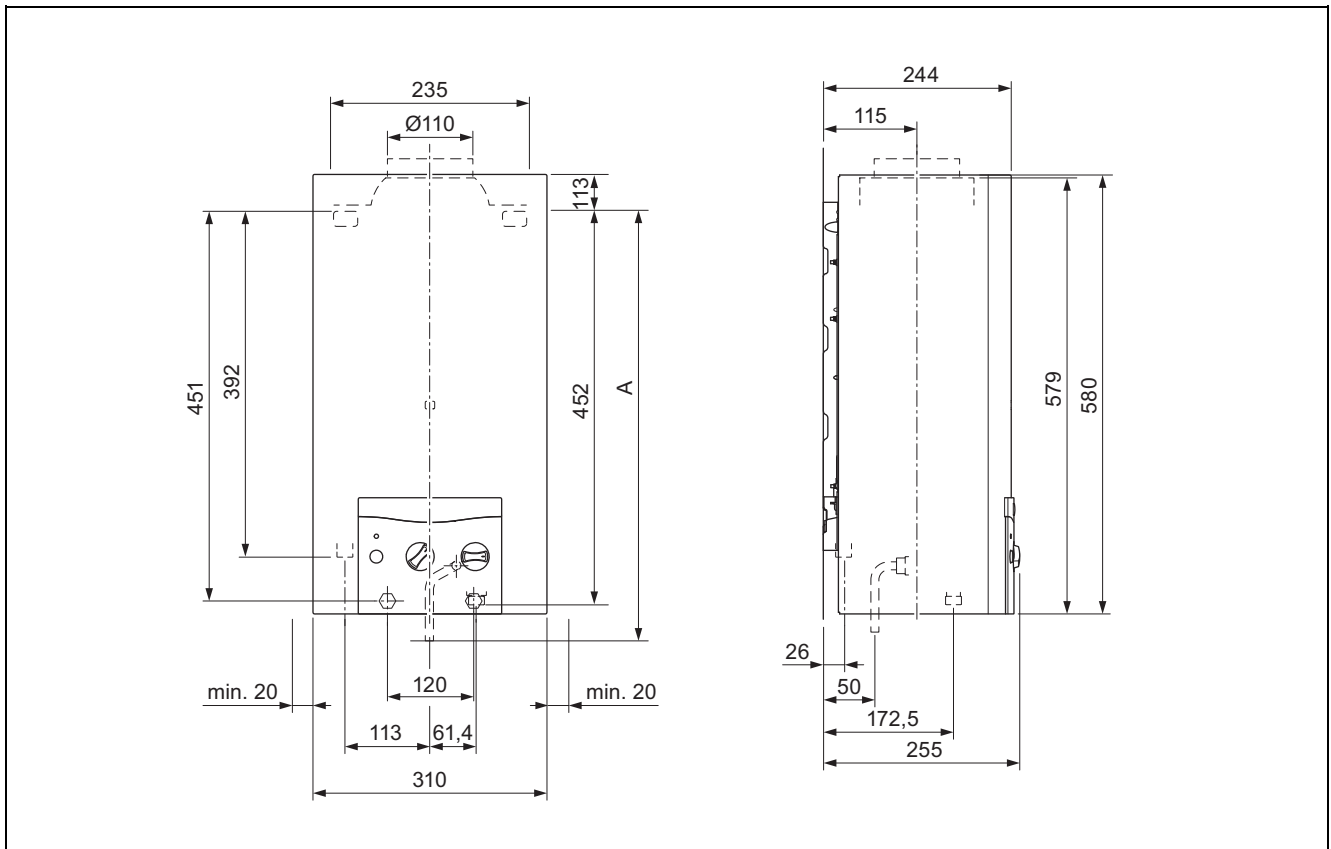
4.3 Minimum clearances



It is not necessary to maintain a clearance between the product and components made of combustible materials that go beyond the minimum clearances.

4 Set-up

4.4 Dimensions



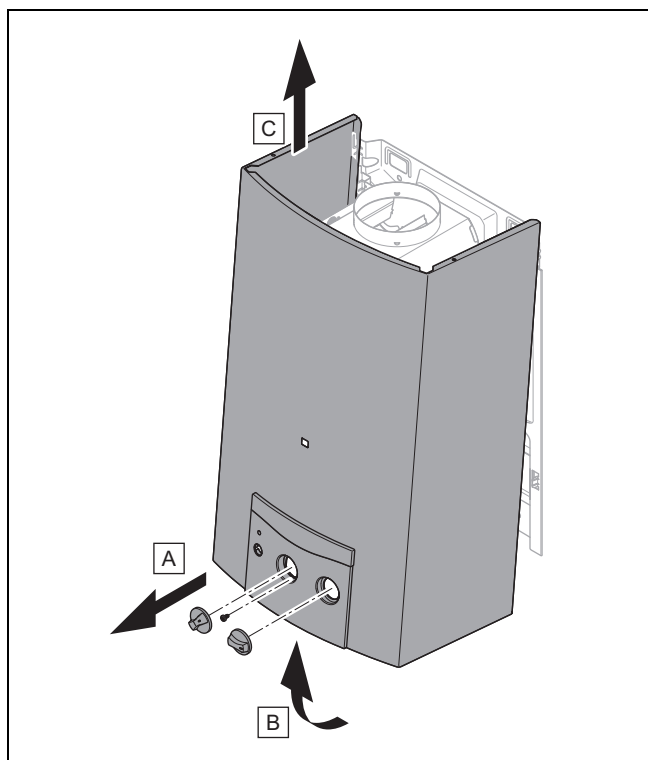
Height, dimension A

| | Estonia |
|-------------------------|---------|
| MAG mini 114/1 I(H-INT) | 493 mm |

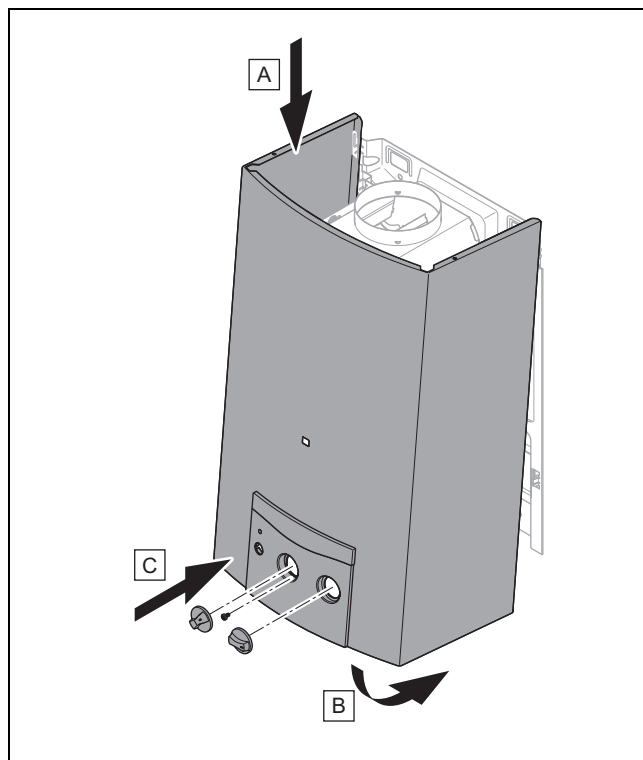
4.5 Requirements for the installation site

- ▶ Select the installation site so that the pipes can be easily routed (gas supply, water supply and drain).
- ▶ Do not install the product above an appliance whose use may damage the gas-fired instantaneous water heater (e.g. above a cooker that can emit grease vapours).
- ▶ Heat-insulate the wall on which you want to install the product if the wall is made of a combustible material, such as wood, so that the minimum clearance between the hot back panel of the product and the wall is complied with.

4.6 Removing the product casing



4.7 Installing the product casing



4.8 Wall-mounting the product

1. Check the load-bearing capacity of the wall.
2. Note the total weight of the product.
3. Only use fixing material that is permitted for the wall.
4. If required, ensure that mounting apparatus on-site has sufficient load-bearing capacity.
5. Wall-mount the product as described.
6. Drill the holes for the fixing screws while taking into consideration the dimensions.
7. To secure the product, depending on the installation site, use wall anchors, hooks, bolts or threaded bolts as the fixing material.
8. Use suitable fixing material to install the back wall of the unit to the wall.

5 Installation



Danger!

Risk of scalding and/or damage due to incorrect installation leading to escaping water.

Stresses in connection cables can cause leaks.

- ▶ Install the connection cables so that they are free from mechanical stress.
- ▶ If you use plastic supply lines for the domestic hot and cold water connection, these must withstand temperatures up to 95 °C and pressures up to 1.3 MPa (13 bar).

5 Installation



Caution.

Risk of material damage due to the gas leak-tightness test.

At a test pressure of >11 kPa (110 mbar), gas leak-tightness tests may cause damage to the gas valve.

- ▶ If, during gas leak-tightness tests, you also place the gas lines and the gas valve in the product under pressure, use a max. test pressure of 11 kPa (110 mbar).
- ▶ If you cannot limit the test pressure to 11 kPa (110 mbar), close any gas isolator cocks that are installed upstream from the product before you carry out the gas leak-tightness test.
- ▶ If, during gas leak-tightness tests, you have closed the gas isolator cock that is installed upstream of the product, relieve the gas line pressure before you open this gas isolator cock.

- ▶ Make sure that the existing gas meter is capable of passing the rate of gas supply required.

5.1 Information on the gas group

In the as-supplied condition, the product is preset for operation with the gas group indicated on the data plate.

If you have a product that has been preset for operation with natural gas, you must convert it to run on liquid gas. You will need a conversion set for this. The conversion procedure is described in the instructions supplied with the conversion set.

5.2 Purging the liquid gas tank

If the liquid gas tank is not purged properly, this may result in ignition problems.

- ▶ Ensure that the liquid gas tank has been purged properly before installing the product.
- ▶ If required, contact the filler or the liquid gas supplier.

5.3 Using the correct gas type

Using the incorrect gas type may cause fault shutdowns in the product. Ignition and combustion noise may occur in the product.

- ▶ Only use the gas type listed on the data plate.

5.4 Sequence for installing the connection

1. Install the domestic hot water connection.
2. Install the cold water connection.
3. Install the gas connection.

5.4.1 Descaling the water

Scale deposition increases as the water temperature increases.

- ▶ Descale the water as required.

5.4.2 Installing the domestic hot and cold water connection



Warning.

Risk of adverse health effects caused by impurities in the potable water.

Sealing residues, dirt or other residues in the pipelines may adversely affect the quality of the potable water.

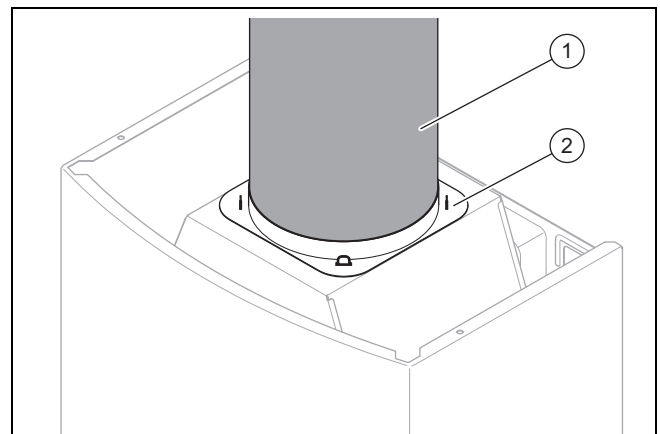
- ▶ Flush all of the hot and cold water pipes thoroughly before you install the product.

- ▶ Make the water connections in accordance with the relevant standards.
- ▶ The inlet temperature must not exceed 23 °C.

5.4.3 Installing the gas connection

- ▶ Install the gas pipe in accordance with the recognised rules of technology.
- ▶ Connect the product to the gas pipe in accordance with the recognised rules of technology.
- ▶ Remove the residues from the gas pipe by blowing through the gas pipe beforehand.
- ▶ Purge the gas pipe before start-up.
- ▶ Check the entire gas supply properly for leak-tightness.

5.5 Connecting the flue pipe



- ▶ Use a flue pipe with the diameter that is specified in the technical data to connect the product to a flue system that has a natural draught (chimney).
- ▶ Insert the flue pipe (1) into the flue pipe connection (2) on the down-draught diverter.

6 Start-up

6.1 Carrying out the initial start-up

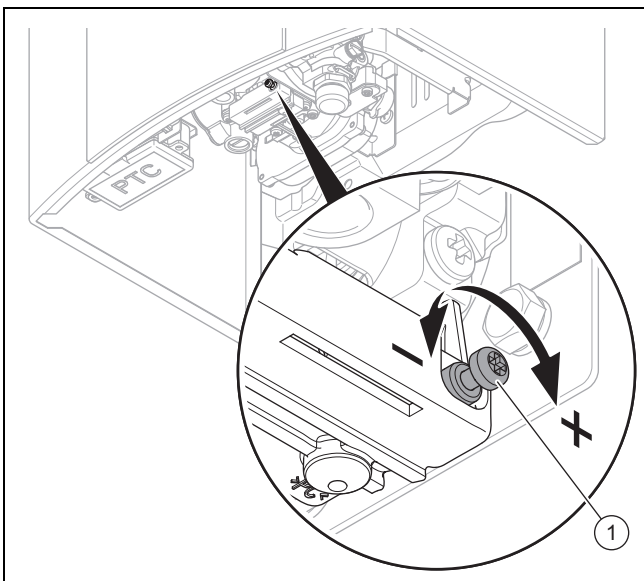
Initial start-up must be carried out by a customer service technician or a qualified competent person.

- ▶ Remove the product casing (→ Page 9).
- ▶ When starting up the unit, proceed in accordance with the attached checklist.

Commissioning checklist (→ Page 19)

6.2 Checking and, if required, setting the water flow rate

1. Measure the water flow rate and compare the value with the value specified in the technical data.
 - At initial start-up
 - After replacing the micro switch



2. If the measured value exceeds the value specified in the technical data, set the flow rate at the micro switch (1).
 - Clockwise rotation: Increase the starting flow rate
 - Anti-clockwise rotation: Decrease the starting flow rate

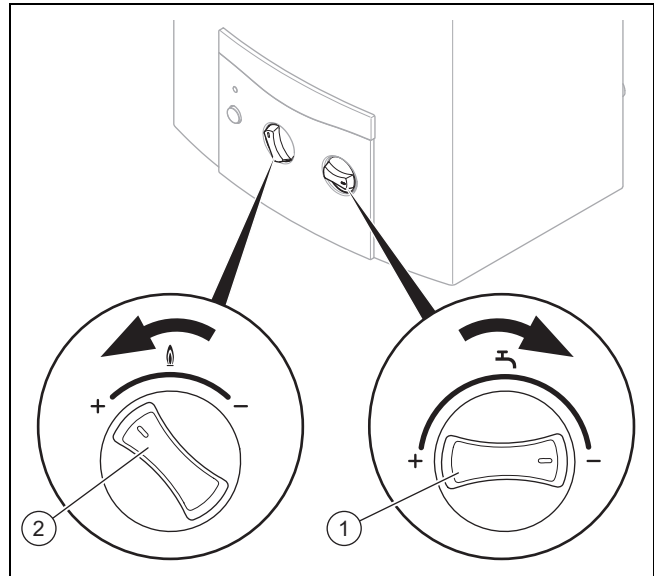
6.3 Gas conversion

1. Observe the applicable national regulations.
2. To convert the gas, use only Vaillant conversion sets or Vaillant spare parts.
3. Follow the instructions contained in the documentation that is supplied with the conversion sets or spare parts.

6.4 Checking that the flue gas sensor works correctly

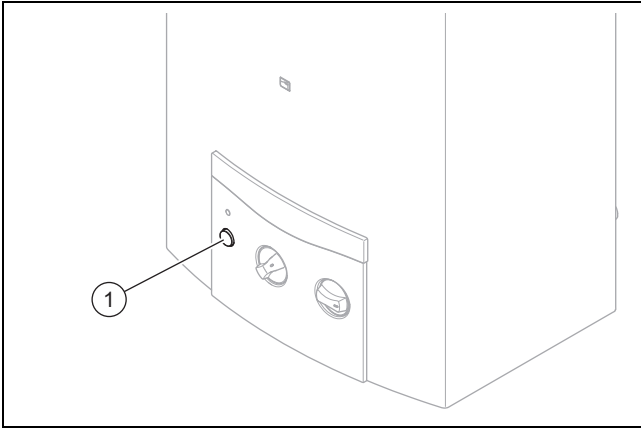
If the flue system is fully or partially blocked or the local air pressure conditions restrict the smooth flue system, the flue gas sensor registers an increase in temperature and interrupts the gas supply.

Check that the flue gas sensor is working correctly, as described below.



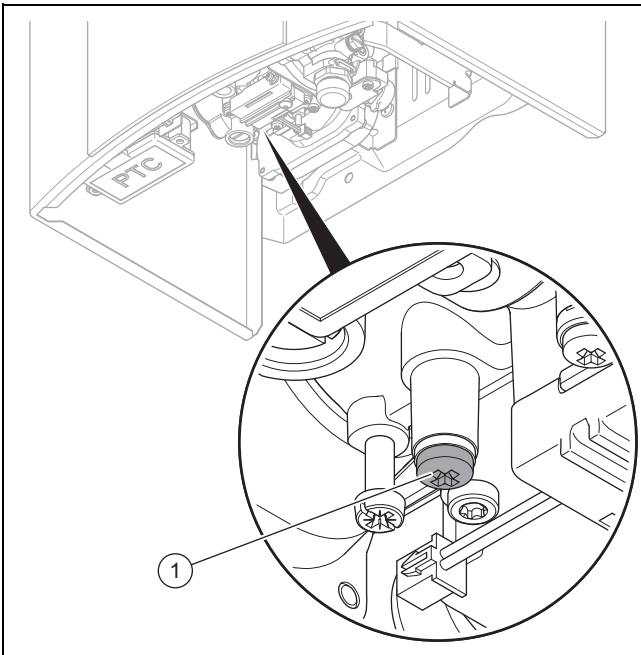
- ▶ Start up the product with the product casing attached.
- ▶ Turn the temperature selector (1) clockwise as far as it goes and turn the rotary power switch (2) anti-clockwise as far as it goes in order to set the lowest water volume and the maximum gas volume.
- ▶ Open a hot water tap.
- ▶ Ensure that the water pressure is at least 0.13 MPa (1.3 bar) during the test.
- ▶ Operate the product until a steady state is reached (approx. 10 minutes).
- ▶ Block off the flue gas route with a Vaillant flue gas restrictor, for example. Also observe the documentation enclosed with the flue gas restrictors.
 - ◁ The flue gas sensor must automatically interrupt the gas supply within two minutes.
- ▶ Close the hot water tap.
- ▶ Allow the flue gas sensor to cool for at least 10 minutes.
- ▶ Start up the product again.

6 Start-up



- ▶ Clear any faults from the product by opening the hot water tap again and switch the product on and off again by pressing the main switch (1) a second time.
- ▶ If the fault clearance does not work or the product is repeatedly blocked by a safety device, check the product or contact Vaillant Customer Service.
- ▶ In this case, shut down the product.

6.5 Checking the gas flow pressure



- ▶ Close the gas stopcock.
- ▶ Unscrew the sealing screw (1) from the test nipple on the gas valve assembly.
- ▶ Remove the seal.
- ▶ Connect a manometer to the test nipple on the gas valve assembly.
- ▶ Open the gas stopcock.
- ▶ Start up the product in accordance with the operating instructions and draw off domestic hot water.
- ▶ Measure the gas flow pressure.

| Gas family | Permissible gas flow pressure |
|--------------------|-------------------------------|
| Natural gas G20 | 1.7–2.5 kPa (17–25 mbar) |
| Liquid gas G31 | 2.5–4.5 kPa (25–45 mbar) |

Condition: Gas connection pressure not in the permissible range



Danger!

Risk of material damage and operating faults caused by incorrect gas flow pressure.

If the gas flow pressure lies outside the permissible range, this can cause operating faults in and damage to the product.

- ▶ Do not make any adjustments to the product.
- ▶ Check the gas installation.
- ▶ Do not start up the product.

- ▶ If you are unable to eliminate the fault, contact the gas supply company.
- ▶ Close the gas stopcock.
- ▶ Remove the manometer.
- ▶ Position the seal on the sealing screw.
- ▶ Screw the sealing screw (1) into the test nipple on the gas valve assembly again.
- ▶ Open the gas stopcock.
- ▶ Check the test nipple for gas tightness.

6.6 Checking leak-tightness

- ▶ Check the gas pipe and the hot water circuit for leak-tightness.
- ▶ Check that the flue system has been installed correctly.

6.7 Handing the product over to the end user

1. Explain to the end user how the safety devices work and where they are located.
2. Inform the end user how to handle the product. Answer any questions the end user may have.
3. Draw special attention to the safety warnings which the end user must follow.
4. Inform the end user that they must have the product maintained in accordance with the specified intervals.
5. Pass all of the instructions and documentation for the product to the end user for safe-keeping.
6. Inform the end user about measures taken to ensure the combustion air supply and flue system, and instruct the end user that he must not make any changes.

7 Troubleshooting

7.1 Detecting and eliminating faults

- ▶ A fault is visually displayed by the LED indicator light. Use the table that is included in the appendix to eliminate the fault.
- ▶ After each time you eliminate a fault, check that the flue gas sensor is working without any problems.
- ▶ If you are unable to eliminate the fault, contact Vaillant Customer Service.

7.2 Eliminating faults in the product

- ▶ Reset the product by carrying out the following steps:
 - Close the water tap and open it again without pressing the main switch.
 - Leave the water tap open and switch the product off and on again by pressing the main switch twice.
- ▶ If resetting fails or the product is repeatedly blocked by a safety device, carry out a complete functional check and a visual check for damage, loose connection cables, loose components, etc. If required, contact Vaillant Customer Service.
- ▶ Only start the product up again once the fault has been eliminated.

8 Inspection and maintenance

- ▶ Adhere to the minimum inspection and maintenance intervals. The inspection may require maintenance to be carried out earlier, depending on the results. You can find the inspection and maintenance work table in the appendix.

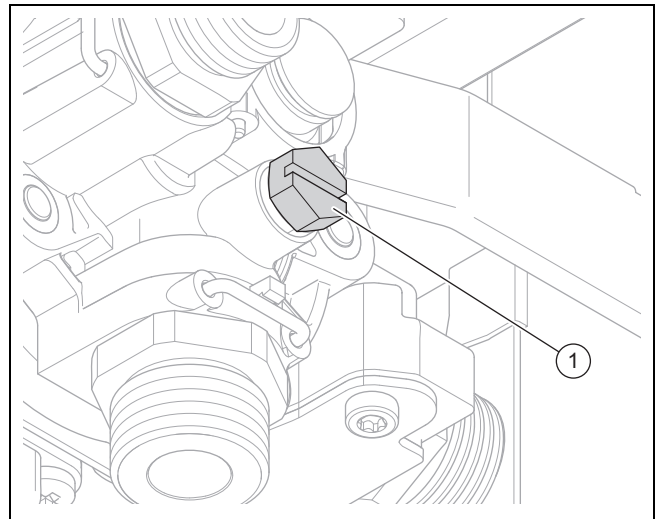
8.1 Procuring spare parts

The original components of the product were also certified by the manufacturer as part of the declaration of conformity. If you use other, non-certified or unauthorised parts during maintenance or repair work, this may void the conformity of the product and it will therefore no longer comply with the applicable standards.

We strongly recommend that you use original spare parts from the manufacturer as this guarantees fault-free and safe operation of the product. To receive information about the available original spare parts, contact the contact address provided on the back page of these instructions.

- ▶ If you require spare parts for maintenance or repair work, use only the spare parts that are permitted for the product.

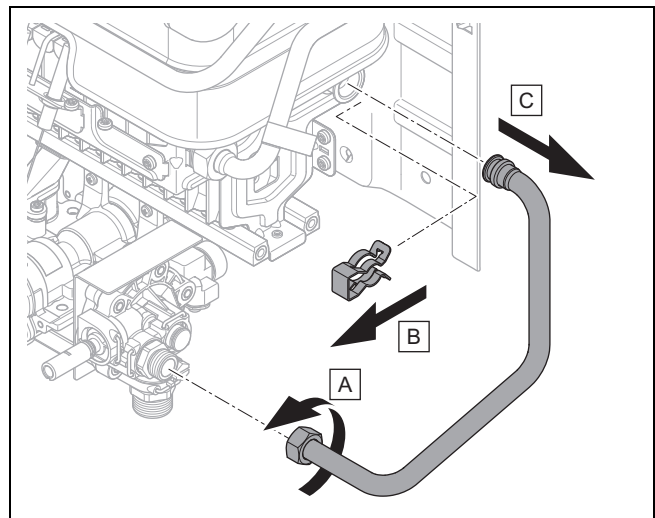
8.2 Draining the product



1. Loosen the drain screw (1) and the sealing ring for the draining.
2. Open all of the hot water taps that are connected to the product so that the product and lines drain until they are completely empty.

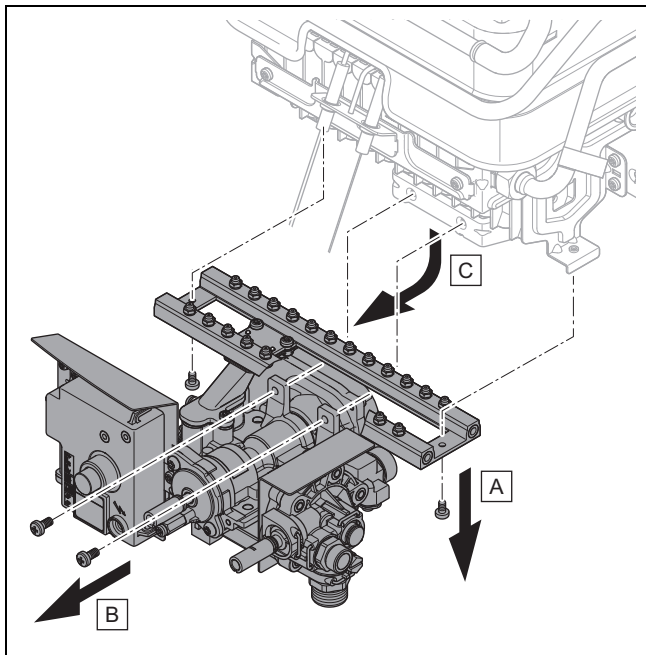
8.3 Removing the burner

1. Close the gas isolation valve and the isolation valve upstream of the cold water inlet.
2. Remove the cold water connection from the product.
3. Remove the gas connection from the product.
4. Drain the product.

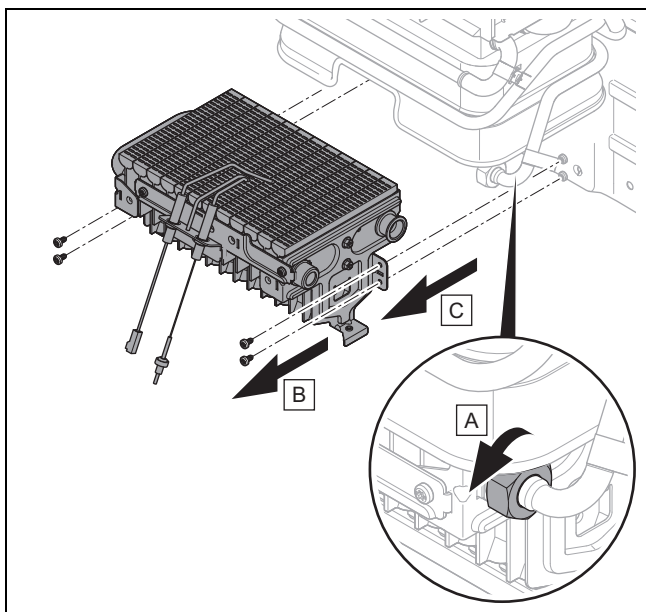


5. Unscrew the union nuts from the water valve. Remove the clip from the cold water connection on the burner.
6. Remove the pipe from the water valve and pull it out of the cold water connection on the burner.

8 Inspection and maintenance



7. Pull out the ignition electrode and the monitoring electrode that are connected to the electronics box.
8. Remove the two screws from the injector rail.
9. Remove the two screws from the gas valve assembly.
10. Remove the gas valve assembly together with the water valve.

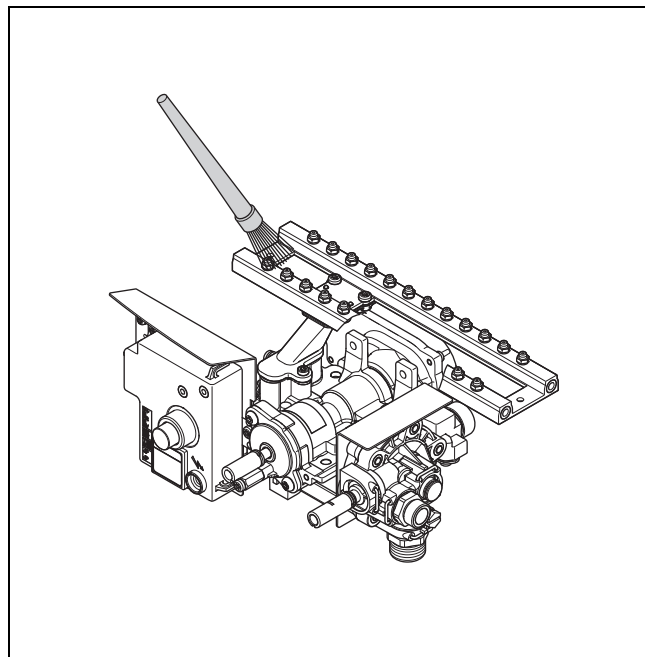


11. Unscrew the union nuts from the water connection for the heat exchanger on the burner.
12. Remove four screws.
13. Raise the burner slightly and carefully pull the burner forwards and out.

8.4 Cleaning the burner

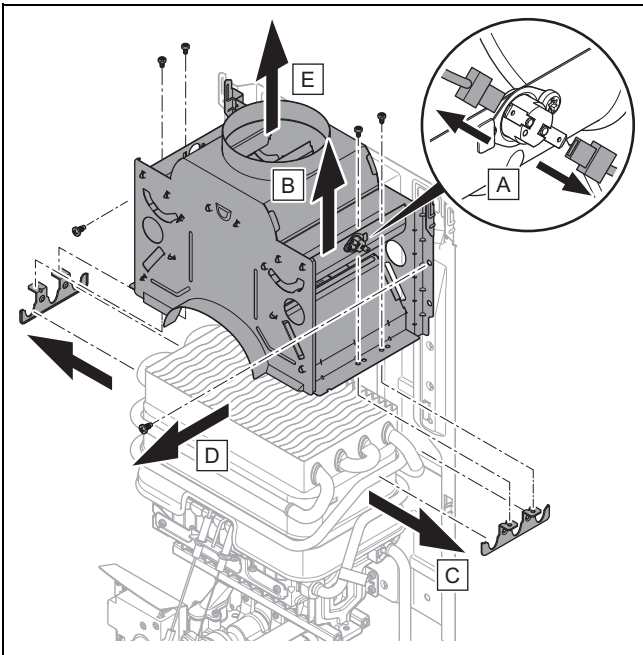
1. Use a brass wire-brush to carefully remove combustion residues from the burner without damaging the burner.
2. Clean the jets, injectors and burner rails with a soft brush and blow out any dust or dirt outside the installation room from the outside to the inside using compressed air.
3. If the burner is extremely dirty, clean it with soapy water and rinse it thoroughly with clean water.

8.5 Cleaning the injector rail



1. Check the components of the injector rail for dirt and damage. You must never remove the burner jets.
2. Clean the dirty components using a soft brush (leaving the installation room to do so), and replace any damaged components if required.
3. Check whether the burner jets are blocked. If a jet is blocked, carefully remove the blockage without damaging this jet.

8.6 Removing the down-draught diverter

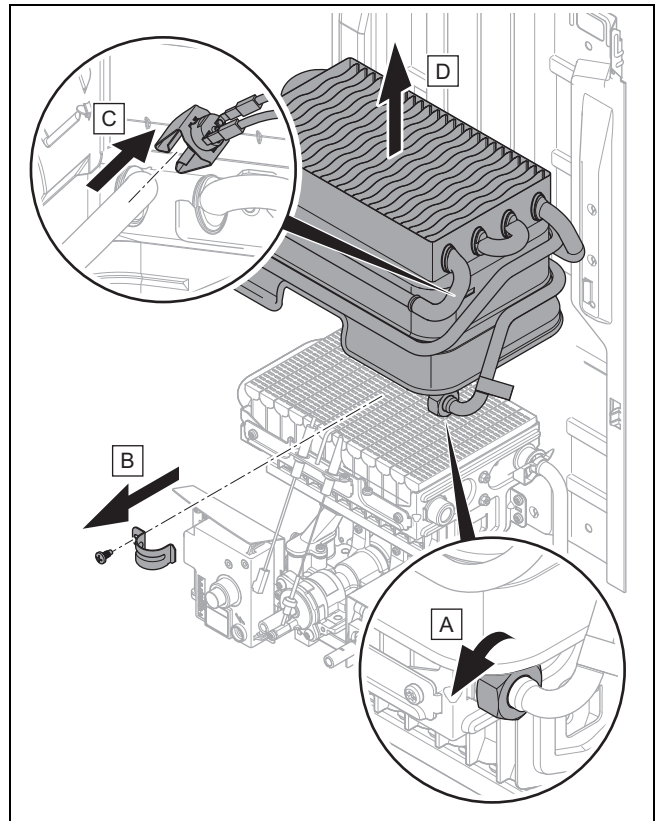


1. Remove the cables from the flue gas sensor.
2. Remove two screws each from the fixing plates on the heat exchanger.
3. Remove two screws each for securing the down-draught diverter on the back panel of the product.
4. Pull out the down-draught diverter.

8.7 Cleaning the down-draught diverter

1. Remove the down-draught diverter. (→ Page 15)
2. Blow any dust and dirt out of the slits in the down-draught diverter. Use a soft brush to remove any dust and greasy dirt from the outside of the down-draught diverter. Only use water if the flue gas sensor has been removed.

8.8 Removing the heat exchanger



Caution.

Risk of material damage caused by damage to the heat exchanger.

Damage that occurs when installing and removing the heat exchanger leads to premature wear.

- ▶ When installing or removing the heat exchanger, ensure that it does not become damaged or bent out of shape.
- ▶ Remove the heat exchanger in the specified sequence.

1. Unscrew the union nuts from the domestic hot water connection on the heat exchanger.
2. Remove the safety cut-out that is secured using a clip on a pipe to the right on the heat exchanger.
3. Unscrew the screw from the clamp for securing the domestic hot water outlet.
4. Remove the heat exchanger.

8 Inspection and maintenance

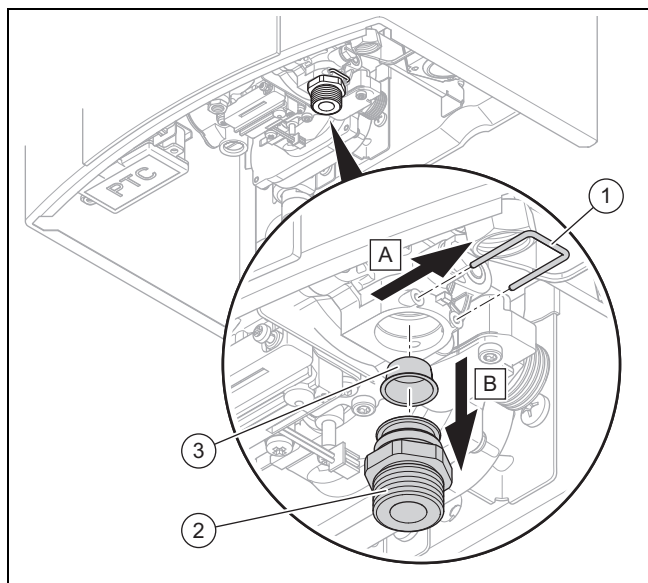
8.9 Cleaning the heat exchanger

1. Use a spray of water to rinse through the fins of the heat exchanger.
2. Use a soft brush to remove the heavier soiling on the fins of the heat exchanger.
 - Ensure that you do not bend the fins on the heat exchanger.
3. If required/necessary, remove any grease and dust by adding a fat-dissolving cleaning agent to a container of hot water.
4. Use a commercial descaler to remove any limescale, while taking into consideration the corresponding documentation.
5. Rinse the heat exchanger under running water.

8.10 Repairing any damage to the coating of the heat exchanger

1. Use a Supral pen to repair minor damage to the heat exchanger coating.
2. Ensure that the damaged area is free from deposits and greasy residues.
3. Shake the Supral pen vigorously before use.
4. Apply the coating material thinly and evenly.

8.11 Checking the water valve



1. Remove the cold water connection line from the cold water connection (2).
2. Visually check the cold water strainer (3) that is downstream of the cold water connection for dirt and scale.
3. If the cold water strainer is dirty or calcified, remove the clamp (1) and pull out the cold water connection.
4. Remove the cold water strainer from the cold water connection and clean the cold water strainer.
5. Reinsert the cold water strainer into the cold water connection.
6. Reinsert the cold water connection into the product's retainer and secure the clip.
7. Secure the cold water connection line to the cold water connection again.
8. Check whether the temperature selector spindle can be turned. Otherwise, loosen the clamps on the temperat-

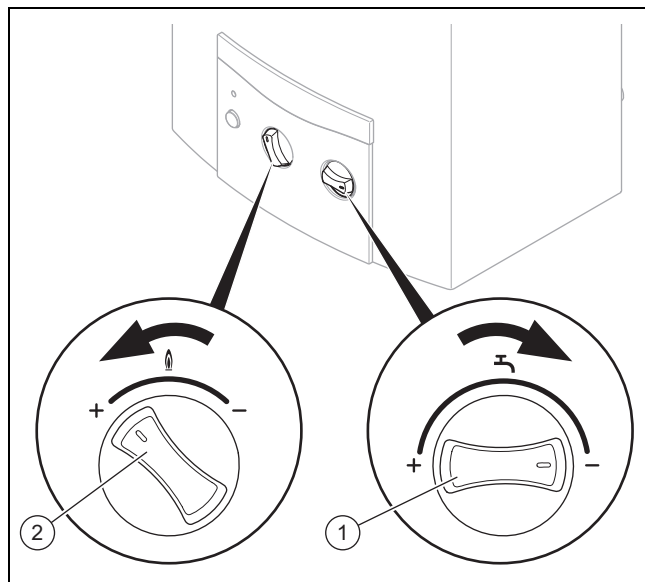
ure selector spindle, remove these and clean the temperature selector spindle.

9. Check the stuffing box for tightness. If a stuffing box is leaking, replace the water valve.

8.12 Checking the heat input

- ▶ Check the heat input either by reading off the gas flow values at the counter (volumetric method) or by checking the burner pressure (burner pressure test method).

Volumetric method



- ▶ When carrying out the check, ensure that no additional gases (e.g. mixtures of liquefied petroleum gas and air) are fed in to cover the peak demand. Contact the responsible gas supply company for this.
- ▶ Ensure that no other gas-fired boilers are operated during the check.
- ▶ Start up the product.
- ▶ Turn the temperature selector (1) clockwise as far as it will go in order to reduce the water volume and set the maximum water temperature.
- ▶ Turn the rotary power switch (2) as far as it will go anti-clockwise to set the maximum product output.
- ▶ Determine the required gas flow value at nominal heat input in accordance with the tables of gas settings in the appendix.
- ▶ Note down the gas meter reading.
- ▶ Draw off domestic hot water with the water tap fully open to enable the nominal water volume to flow (→ Technical data).
- ▶ After approx. five minutes of the product running in continuous operation, read off the gas flow value at the meter and compare this with the gas flow value at nominal heat input in the tables of gas settings in the appendix.



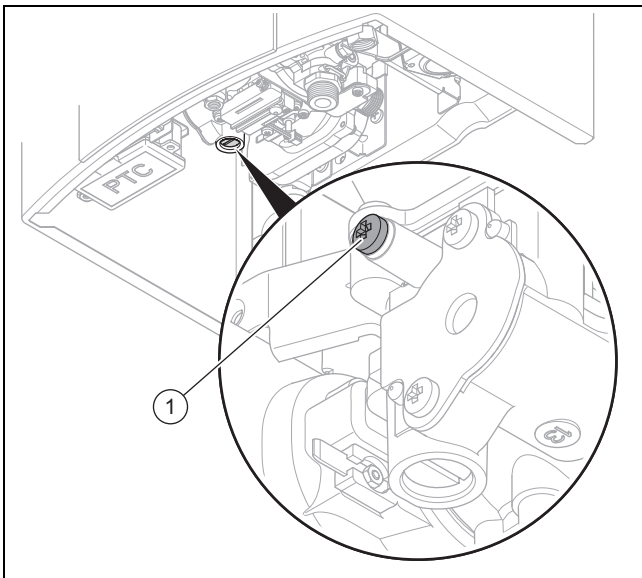
Note

Deviations of $\pm 5\%$ are permitted.

Condition: The deviation is greater than $\pm 5\%$

- ▶ Check whether the correct burner jets have been used in the injector rail for the burner by comparing the labels on the burner jets with the specifications in the tables of gas settings in the appendix.
- ▶ If incorrect burner jets have been used, contact Customer Service. Do not start up the product.
- ▶ If the correct burner jets are being used, continue with the following steps.
- ▶ Remove the burner. (→ Page 13)
- ▶ Clean the burner. (→ Page 14)
- ▶ Refit the burner assembly in the reverse order.
- ▶ Repeat the check of the heat input.
- ▶ If the deviation continues to be greater than $\pm 5\%$, adjust the maximum heat input (→ Page 17).

Burner pressure test method



- ▶ Unscrew the sealing screw from the test nipple (1) for the burner pressure.
- ▶ Remove the seal.
- ▶ Connect a manometer (resolution at least 0.1 mbar).
- ▶ Start up the product.
- ▶ Turn the temperature selector clockwise as far as it will go in order to reduce the water volume and set the maximum water temperature.
- ▶ Turn the rotary power switch as far as it will go anti-clockwise to set the maximum product output.
- ▶ Draw off domestic hot water with the water tap fully open to enable the nominal water volume to flow (→ Technical data).
- ▶ Look up the required burner pressure in the tables of gas settings in the appendix and compare the value with the corresponding value in the table.



Note

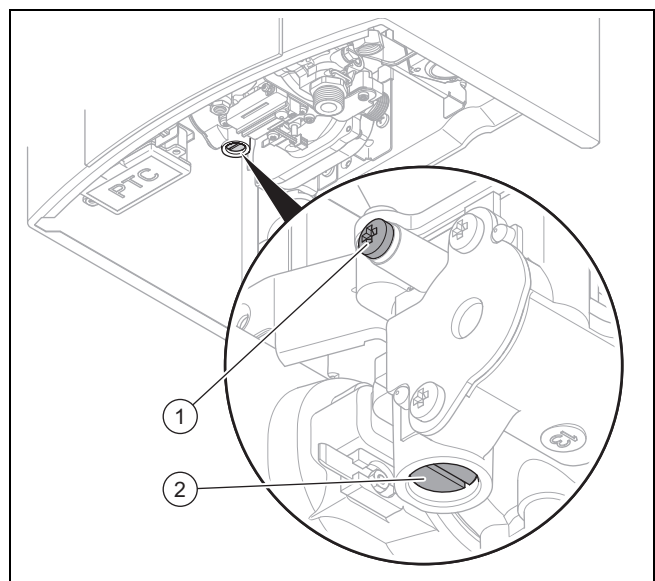
Deviations of $\pm 10\%$ are permitted.

- ▶ Remove the manometer.
- ▶ Place the sealing screw and the seal on the test nipple, tighten the sealing screw and check that it is leak-tight.

Condition: The deviation is greater than $\pm 10\%$

- ▶ Check whether the correct burner jets have been used in the injector rail for the burner by comparing the labels on the burner jets with the specifications in the tables of gas settings in the appendix.
- ▶ If incorrect burner jets have been used, contact Customer Service. Do not start up the product.
- ▶ If the correct burner jets are being used, continue with the following steps.
- ▶ Remove the burner. (→ Page 13)
- ▶ Clean the burner. (→ Page 14)
- ▶ Refit the burner assembly in the reverse order.
- ▶ Repeat the check of the heat input.
- ▶ If the deviation continues to be greater than $\pm 10\%$, adjust the maximum heat input (→ Page 17).

8.13 Setting the maximum heat input



1. Turn the temperature selector clockwise as far as it will go in order to reduce the water volume and set the maximum water temperature.
2. Turn the rotary power switch as far as it will go anti-clockwise to set the maximum product output.
3. Unscrew the sealing screw from the test nipple (1) for the burner pressure.
4. Connect a manometer (resolution at least 0.1 mbar).



Caution.

Risk of a gas leak

The adjusting screw seals the gas valve assembly in the housing.

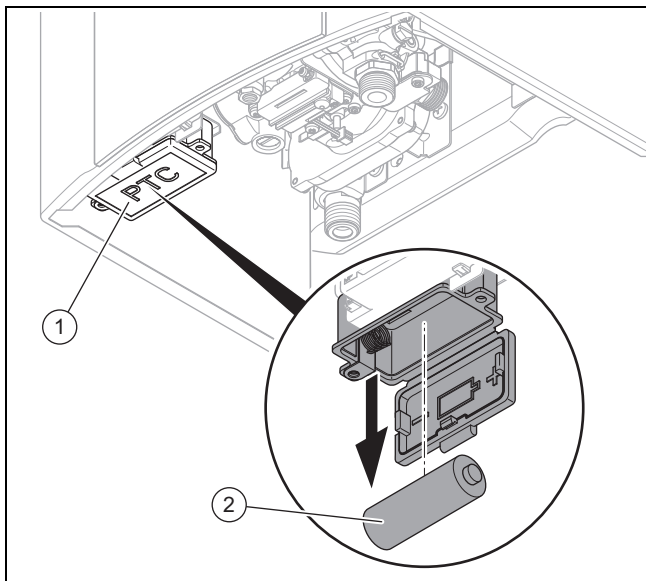
- ▶ Never fully unscrew the adjusting screw.

5. Use a flat-blade screwdriver to set the maximum heat input on the adjusting screw (2).
6. Read off the value for the maximum heat input on the manometer.
7. If you are unable to set the correct values in accordance with the tables of gas settings in the appendix, do not start up the product. Report this to customer service.

9 Decommissioning

- Remove the manometer.
- Place the sealing screw and the seal on the test nipple, tighten the sealing screw and check that it is leak-tight.

8.14 Replacing the battery



- Ensure that no hot water tap is opened while you are replacing the battery.



Danger!

Risk of explosion due to heated batteries.

Discharged batteries may explode as a result of being charged or heated.

- ▶ Do not re-charge discharged batteries.
- ▶ Keep batteries away from fire and ensure that they are not heated up in any other way.

- Open the battery compartment cover (1).



Note

The battery compartment can be accessed without removing the front casing.



Danger!

Risk of death caused by unsuitable batteries!

If batteries are replaced with the wrong type of battery, there is a risk of explosion.

- ▶ Ensure that you use the correct battery type when replacing batteries.
- ▶ Dispose of used batteries in accordance with the instructions in this manual.

- Remove the old battery (2) and insert a new battery in the battery compartment in accordance with the markings on the cover.



Note

Only use batteries of the type D/LR20.
Do not use rechargeable batteries.

8.15 Completing inspection and maintenance work

- ▶ Install all of the components in reverse order.
- ▶ Install the product casing (→ Page 9).
- ▶ Start up the product.
- ▶ Check that all control, regulation and monitoring devices and, in particular, the flue gas sensor (→ Page 11) are working properly.
- ▶ Check that the product and the flue system are leak-tight.
- ▶ Log all maintenance work that is carried out.

8.16 Checking the product for leak-tightness

- ▶ Check that the product is leak-tight. (→ Page 12)

9 Decommissioning

- ▶ Press the main switch.
- ▶ Close the gas stopcock.
- ▶ Close the cold-water isolation valve.
- ▶ Drain the product. (→ Page 13)

10 Recycling and disposal

Disposing of the packaging

- ▶ Dispose of the packaging correctly.
- ▶ Observe all relevant regulations.

11 Customer service

Meie klienditeeninduse kontaktandmed leiate tagaküljel toodud aadressi või www.vaillant.ee alt.

Appendix

A Commissioning checklist

| No. | Procedure | Comment | Required tool |
|-----|--|---|-------------------------------------|
| 1 | Checking the water filter | Check for availability. | |
| 2 | Check the starting water flow rate before start-up | The water flow rate must not exceed the maximum value. | |
| 3 | Starting up the product | | |
| 4 | Check the entire gas route for tightness | Use leak detection spray or a leak detector. | Leak detection spray/leak detector |
| 5 | Check the entire water route for tightness | Carry out a visual check. | |
| 6 | Checking that the flue gas sensor works correctly | See section "Checking that the flue gas sensor works correctly". | Vaillant flue gas restrictor |
| 7 | Measuring the chimney draught | The maximum draught must not exceed 15 Pa. If the draught is too great, the chimney draught must be restricted using suitable measures. | Analyser for chimney draught |
| 8 | Checking combustion | Check for flue gas exit. Target value for nominal heat input: Only carry out the measurement after ten minutes of normal operation. – Natural gas: CO 200 ppm Liquefied petroleum gas: CO 300 ppm | Dew point hygrometer CO analyser |
| 9 | Checking the gas flow pressure | See section "Checking the gas flow pressure". | U-tube or digital manometer |
| 10 | Switching off the product and switching it back on again | | |
| 11 | Setting the domestic hot water function | | |
| 12 | Handing over the operating instructions to the customer | | |

B Troubleshooting

| Symptom | Possible cause | Measure |
|---|--------------------------------------|--|
| The product does not work. The LED does not light up. | Battery flat | <ol style="list-style-type: none"> 1. Replace the battery. 2. Ensure that the cold-water isolation valve is open. 3. If required, clean the strainer in the cold water inlet. |
| The LED flashes blue for up to ten minutes after water is drawn. Loud over-ignition. | Low battery charge | ► Replace the battery. |
| The product cannot be started up. The LED flashes red for up to ten minutes after water is drawn. | The gas supply is interrupted. | <ol style="list-style-type: none"> 1. Secure the gas supply. 2. For liquefied petroleum gas: Replace an empty gas cylinder with a full one. 3. Ensure that the isolation valve on the gas connection is open. |
| | There is air in the gas supply line. | ► Open and close the water tap several times in order to remove air from the gas supply. |
| | Fault in the ignition device | <ol style="list-style-type: none"> 1. Check the cable connection for the plug contact. 2. Replace the electrodes. |
| | The servomotor is defective. | ► Replace the servo valve. |
| The product switches off during operation. The LED flashes red. | The gas supply is interrupted. | <ol style="list-style-type: none"> 1. Secure the gas supply. 2. For liquefied petroleum gas: Replace an empty gas cylinder with a full one. 3. Ensure that the isolation valve on the gas connection is open. |
| | There is air in the gas supply line. | ► Open and close the water tap several times in order to remove air from the gas supply. |
| | Ionisation flow too low. | ► Check the ionisation flow. |

| Symptom | Possible cause | Measure |
|---|--|--|
| The product switches off during operation. The LED flashes red. | The flame detector is defective. | <ol style="list-style-type: none"> 1. Check the cable connection for the plug contact. 2. If required, replace the monitoring electrode. |
| | The flue gas guiding is restricted, which causes overheating (flue pipe is blocked). | ▶ Check that the flue system has been installed correctly and that there are no problems with the flue system. |
| | Cable break or short circuit in the cable on the safety cut-out or flue gas sensor. | ▶ Check how the cables are laid. |
| | The safety cut-out or flue gas sensor is defective. | <ol style="list-style-type: none"> 1. Check the safety cut-out and flue gas sensor. 2. Replace the defective component. |

C Tables of gas settings

Factory gas ratio setting

| Unit type for | Natural gases | Liquefied petroleum gases |
|-------------------------|--------------------------------|----------------------------------|
| Label on the data plate | 2H G20 – 2 kPa (20 mbar) | 3P G31 – 3.7 kPa (37 mbar) |
| Factory setting | G20 | G31 |
| Burner jets label | 114/1 | 114/1 |
| | 085 | 050 |

Gas flow


| Gas family | Gas flow at nominal heat input in l/min |
|----------------------|---|
| | 114/1 |
| Natural gas 2H (G20) | 38.3 |
| Liquid gas 3P (G31) | 14.8 |


Burner pressure

| Gas family | Burner pressure for nominal heat input |
|----------------------|--|
| | 114/1 |
| Natural gas 2H (G20) | 1.12 kPa (11.2 mbar) |
| Liquid gas 3P (G31) | 3.17 kPa (31.7 mbar) |

D Inspection and maintenance interval

The table below lists the manufacturer requirements with respect to minimum inspection and maintenance intervals. If national regulations and directives require shorter inspection and maintenance intervals, you should observe these instead of the intervals listed. Each time inspection and maintenance work is carried out, carry out the required preparatory and completion work.

| # | Maintenance work | Interval |  |
|---|---|-------------------------------------|---|
| 1 | Remove any dirt from the product | Annually | |
| 2 | Check the flue gas sensor for dirt and damage. Checking that the flue gas sensor is working correctly by completely blocking the flue gas with flue gas restrictors | Annually | |
| 3 | Checking the safety cut-out for dirt and damage | Annually | |
| 4 | Cleaning the burner | If required, at least every 2 years | 14 |
| 5 | Cleaning the heat exchanger | If required, at least every 2 years | 16 |
| 6 | Cleaning the injector rail | If required, at least every 2 years | 14 |
| 7 | Cleaning the down-draught diverter | If required, at least every 2 years | 15 |
| 8 | Check the ignition electrode and thermocouple for damage, and replace any bent and damaged components | Annually | |

| # | Maintenance work | Interval |  |
|----|--|-------------------------------------|---|
| 9 | Checking the seals on the test nipples for damage and replacing any damaged seals | Annually | |
| 10 | Checking that the water flow switch (micro switch) is working correctly | Annually | |
| 11 | Carry out a test operation on the product, incl. domestic hot water generation | Annually | |
| 12 | Checking leak-tightness | Annually | 12 |
| 13 | Checking the heat input | Annually | 16 |
| 14 | Check the flame pattern. Flames must not touch the heat exchanger shaft | If required, at least every 2 years | |
| 15 | Visually inspecting the test nipples and hoses | Annually | |
| 16 | Interrupt the thermocurrent by disconnecting the connection between the thermocouple and holding magnet. The product must be shut down | Annually | |
| 17 | Checking the water valve | If required, at least every 2 years | 16 |
| 18 | Logging flue-gas measured values and any maintenance work that was carried out | Annually | |
| 19 | Checking the product to see if flue gas is escaping at the down-draught diverter, with the doors and windows closed and the casing installed | Annually | |

E Technical data

Technical data – General

| | MAG mini 114/1 I(H-INT) |
|--|-------------------------|
| Designated country (designation in accordance with ISO 3166) | EE |
| Approved unit categories | II _{2H3P} |
| Unit dimensions, height | 580 mm |
| Unit dimensions, width | 310 mm |
| Unit dimensions, depth (incl. rotary switch) | 255 mm |
| Flue pipe connection diameter | 110 mm |
| Min. length of the flue pipe | 0.5 m |
| Gas connection diameter | 1/2" conical |
| Water connection diameter (inlet) | G1/2" |
| Water connection diameter (outlet) | G1/2" |
| Net weight | 9.6 kg |
| Gross weight | 12.1 kg |
| Test symbol/registration no. | 1008CS3137 |

Technical data – Power/load

| | MAG mini 114/1 I(H-INT) |
|---|-------------------------|
| Domestic hot water volume at the "hot" temperature selector position | 2.6 to 5.5 l/min |
| Domestic hot water volume at the "warm" temperature selector position | 5.4 to 11.0 l/min |
| Max. heat input (in relation to the net calorific value H_i) | 21.7 kW |
| Min. heat input ($Q_{min.}$) | 7.6 kW |
| Max. heat output ($P_{max.}$) | 18.1 kW |
| Min. heat output ($P_{min.}$) | 6.4 kW |
| Control range | 6.4 to 18.1 kW |

| | MAG mini 114/1 I(H-INT) |
|---|-------------------------|
| Max. permissible water pressure $P_{w \text{ max.}}$ | 1.3 MPa (13.0 bar) |
| Min. permissible water pressure $P_{w \text{ min.}}$ when the temperature selector is positioned at "warm" | 0.31 bar (31,000 Pa) |
| Min. permissible water pressure $P_{w \text{ min.}}$ when the temperature selector is positioned at "hot" | 0.16 bar (16,000 Pa) |
| Flue gas temperature at max. heat output | 200 °C |
| Flue gas temperature at min. heat output | 105 °C |
| Min. chimney draught | 1.5 Pa |
| Min. chimney draught when using a thermal flue non-return flap | 10.0 Pa |

Technical data – Natural gas G20

| | MAG mini 114/1 I(H-INT) |
|---|---------------------------------------|
| Gas flow rate at max. heat output | 2.3 m ³ /h |
| Gas connection pressure | 1.7 to 2.5 kPa (17.0 to 25.0 mbar) |
| Number of burner jets | 24 |
| Burner jet | 0.85 mm |
| Burner pressure | 11.2 mbar (0.0112 bar) |
| Air requirement for combustion at max. heat input | 38.77 m ³ /h |
| Air requirement for combustion at min. heat input | 30.62 m ³ /h |
| CO ₂ content at max. heat output | 6.3 % |
| CO ₂ content at min. heat output | 2.7 % |
| Max. flue gas mass flow rate | 6.40 g/s |
| Min. flue gas mass flow rate | 1.78 g/s |

Technical data – G31 liquefied petroleum gas

| | MAG mini 114/1 I(H-INT) |
|---|---------------------------------------|
| Gas flow rate at max. heat output | 1.69 kg/h |
| Gas connection pressure | 2.5 to 4.5 kPa (25.0 to 45.0 mbar) |
| Number of burner jets | 24 |
| Burner jet | 0.5 mm |
| Burner pressure | 31.7 mbar (0.0317 bar) |
| Air requirement for combustion at max. heat input | 38.3 m ³ /h |
| Air requirement for combustion at min. heat input | 28.9 m ³ /h |
| CO ₂ content at max. heat output | 7.3 % |
| CO ₂ content at min. heat output | 3.3 % |
| Max. flue gas mass flow rate | 4.13 g/s |
| Min. flue gas mass flow rate | 1.1 g/s |



0020271885_02

0020271885_02 ■ 16.02.2021

Supplier

Vaillant Group International GmbH

Berghauser Strasse 40 ■ 42859 Remscheid

Tel. +492191 18 0

www.vaillant.info

© These instructions, or parts thereof, are protected by copyright and may be reproduced or distributed only with the manufacturer's written consent.
Subject to technical modifications.